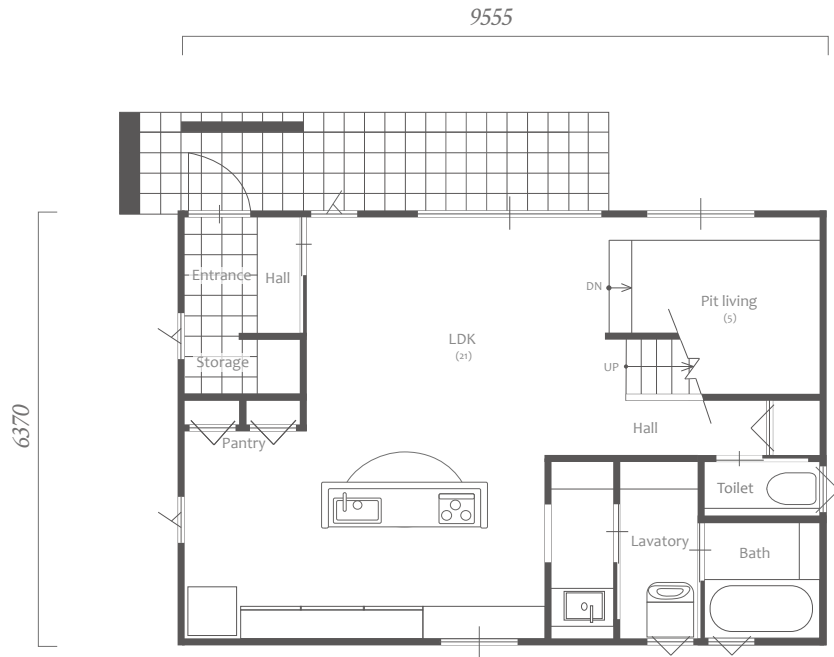
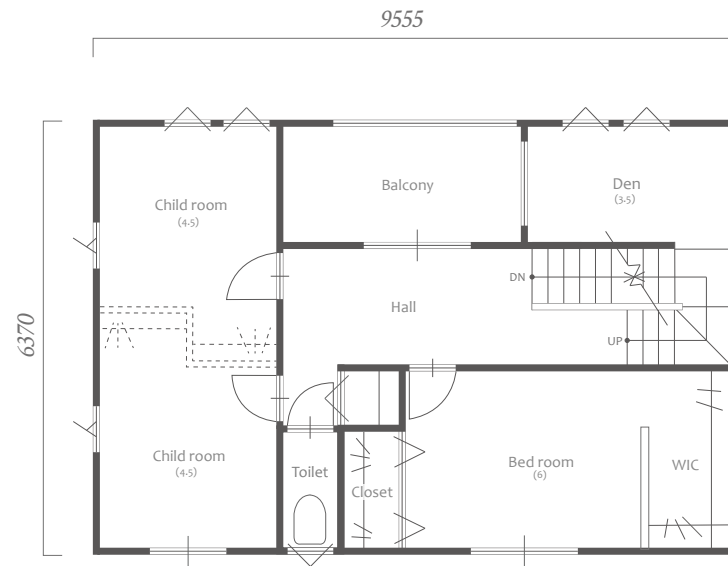


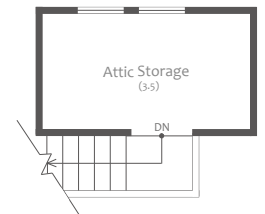
# North plan Large



1F



2F



2.5F

## Spec

建築面積	64.26 m <sup>2</sup> (19.44坪)	延床面積	126.70 m <sup>2</sup> (38.34坪)
1F面積	60.87 m <sup>2</sup> (18.42坪)	2F面積	60.87 m <sup>2</sup> (18.42坪)
		2.5F 面積	4.96m <sup>2</sup> (1.5坪)